



# XpressPure Beads - PCR Cleanup Kit

MAGNETIC NANOPARTICLE BASED

PCR CLEAN UP KIT

**1**

**Binding**

**2**

**Washing**

**3**

**Elution**

**XpressPure Beads - PCR Cleanup Kit**

VISIT US FOR MORE INFORMATION  
[WWW.MAGGENOME.US](http://WWW.MAGGENOME.US)

Product Description

The XpressPure Beads is designed to recover or concentrate DNA fragments from PCR or other enzymatic reactions. Specific DNA fragment is bound to the surface of the magnetic nanoparticles and released using a buffer system. The XpressPureBeads PCR Cleanup- kit can be easily adapted to automated magnetic bead separation instruments and workstations. The purified DNA can be used in a variety of downstream applications.

Advantages

- High Yield: >90% recovery
- High Quality DNA: A260/A280 = 1.6- 2.0
- Magnetic Nanoparticle Size: ~10 nm
- Broad Fragment Size Range: 100 bp-1.5 kb
- Easily adapted to automated magnetic bead separation instruments and workstations
- Sample: 10 µl to 100 µl of PCR products
- Manual or automated DNA isolation
- Operation time: 25 minutes (manual)
- Storage: room temperature (15-25°C)

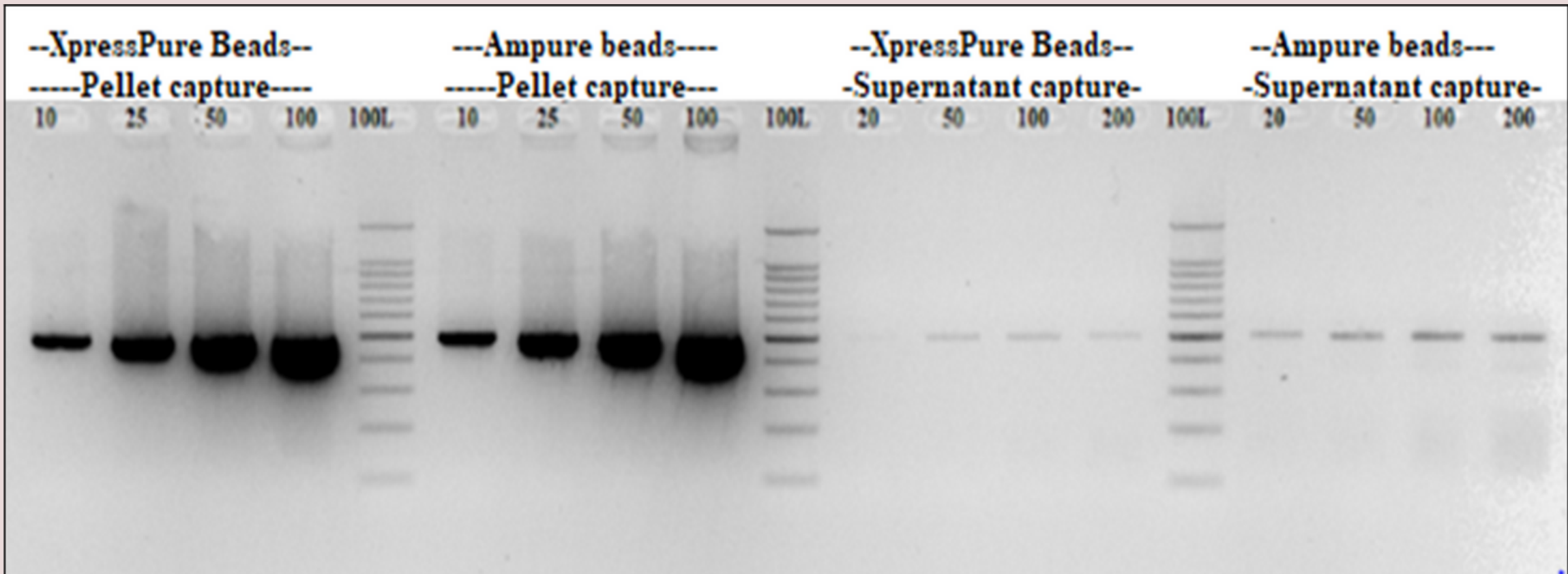
Comparison of XpressPure beads with PCR clean-up spin-column



| Frag size (bp) | Methods tested             | Conc (ng/µl) | Yield in 20 (µl) | A260/280 | A260/230 |
|----------------|----------------------------|--------------|------------------|----------|----------|
| 1500           | XpressPure Beads           | 30.4         | 608              | 1.9      | 1.99     |
|                | NucleoSpin PCR cleanup kit | 65.5         | 1310             | 1.83     | 0.49     |

Sample: PCR product of 1500bp; rxn volume: 25 µl; Elution volume: 20µl

Comparison of XpressPure beads with Ampure beads



|                  | Sample vol (ul) | Conc (ng/ul) | A260/280 |        | Sample vol (ul) | Conc (ng/ul) | A260/280 |
|------------------|-----------------|--------------|----------|--------|-----------------|--------------|----------|
| XpressPure Beads | 10              | 28.3         | 1.89     | Ampure | 10              | 28           | 1.93     |
|                  | 25              | 76.3         | 1.88     |        | 25              | 72.1         | 1.88     |
|                  | 50              | 143          | 1.87     |        | 50              | 146.2        | 1.87     |
|                  | 100             | 280.4        | 1.88     |        | 100             | 282.2        | 1.89     |

PCR product clean-up from different sample volumes: capture with XpressPure Beads and Ampure beads